

The Environmental Report

Living up to its mission of helping beauty brands perform, Quadpack is a global manufacturer and provider of packaging solutions. Aiming to have a positive impact on people and the planet, the group is committed to continuously improving the sustainability of its product portfolio.

The Environmental Report (ER) is an informative document that collects details of pack components and analyses their Life Cycle Assessment (LCA) data. The aim is to help customers choose their preferred combination relying on science-based information about the product's environmental footprint.

Quadpack uses PIQET's LCA tool to assess the environmental impacts and resource consumption of all packaging options. This data is then translated into our PIP rating system, which is a clear and transparent indicator of a product's sustainability level.



TrapPET Jar 15ml virgin



Score		LCA		Input			Environmental indicators		Circularity		
PIP Rating	Product type	Item code	Catalogue description	Material	Recycled content %	Renewable energy	Manufactured in EMEA	Water use volume (kL H2O) target 0	Carbon Footprint (kg CO2 eq) target 0	Circularity index target 1	Sustainable attributes
	Jar	20003452	C-PET-15ml-SWJar-Trappet	PET	0%	Yes	Yes	0.00	0.07	0.48	
	Cap	20003462	C-PP-Std.Cap-SW-15mlTrappet	PP	0%	Yes	Yes	0.00	0.01	0.41	
	Shive	20003460	C-PE-D36.5mm-Shive-Trappet-15ml	PP	0%	Yes	Yes	0.00	0.00	0.48	

Source: The values for the Environmental Indicators shown in this report have been calculated with the LCA tool PIQET, in September 2022.
Date: 18/01/2023
ER index: N° 1



Legend

Positive Impact Packaging rating



Sustainable attributes



Definitions

Climate change in CO2: The result of global warming due to CO2 emissions released into the atmosphere as a result of the activities of a particular individual, organization, or community.

Circularity: Environmental systems that aim to eliminate waste and maximise the reuse of resources by creating a closed loop system.

Water use volume: The amount of water used in the production and supply of goods and services.

Renewable energy: Energy derived from natural resources that are replenished at a higher rate than they are consumed. Sunlight and wind, for example.

The Environmental Report

Living up to its mission of helping beauty brands perform, Quadpack is a global manufacturer and provider of packaging solutions. Aiming to have a positive impact on people and the planet, the group is committed to continuously improving the sustainability of its product portfolio.

The Environmental Report (ER) is an informative document that collects details of pack components and analyses their Life Cycle Assessment (LCA) data. The aim is to help customers choose their preferred combination relying on science-based information about the product's environmental footprint.

Quadpack uses PIQET's LCA tool to assess the environmental impacts and resource consumption of all packaging options. This data is then translated into our PIP rating system, which is a clear and transparent indicator of a product's sustainability level.



TrapPET Jar 15ml PCR



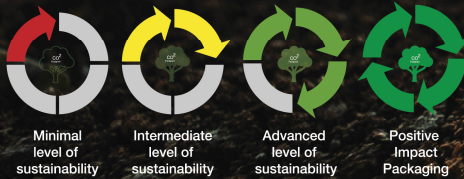
Score		LCA		Input			Environmental indicators		Circularity		
PIP Rating	Product type	Item code	Catalogue description	Material	Recycled content %	Renewable energy	Manufactured in EMEA	Water use volume (kL H2O) target 0	Carbon Footprint (kg CO2 eq) target 0	Circularity index target 1	Sustainable attributes
	Jar	20003453	C-rPET-50%-15ml-SWJar-Trappet	PET	50%	Yes	Yes	0.00	0.06	0.6	
	Cap	20003464	C-rPP-100%-Std.Cap-SW-15mlTrappet	PP	85%	Yes	Yes	0.00	0.01	0.61	
	Shive	20003460	C-PE-D36.5mm-Shive-Trappet-15ml	PP	0%	Yes	Yes	0.00	0.00	0.48	

Source: The values for the Environmental Indicators shown in this report have been calculated with the LCA tool PIQET, in September 2022.
Date: 18/01/2023
ER index: N° 1



Legend

Positive Impact Packaging rating



Sustainable attributes



Definitions

Climate change in CO2: The result of global warming due to CO2 emissions released into the atmosphere as a result of the activities of a particular individual, organization, or community.

Circularity: Environmental systems that aim to eliminate waste and maximise the reuse of resources by creating a closed loop system.

Water use volume: The amount of water used in the production and supply of goods and services.

Renewable energy: Energy derived from natural resources that are replenished at a higher rate than they are consumed. Sunlight and wind, for example.

The Environmental Report

Living up to its mission of helping beauty brands perform, Quadpack is a global manufacturer and provider of packaging solutions. Aiming to have a positive impact on people and the planet, the group is committed to continuously improving the sustainability of its product portfolio.

The Environmental Report (ER) is an informative document that collects details of pack components and analyses their Life Cycle Assessment (LCA) data. The aim is to help customers choose their preferred combination relying on science-based information about the product's environmental footprint.

Quadpack uses PIQET's LCA tool to assess the environmental impacts and resource consumption of all packaging options. This data is then translated into our PIP rating system, which is a clear and transparent indicator of a product's sustainability level.



TrapPET Jar 50ml Virgin



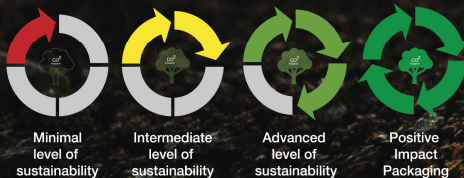
Score		LCA		Input			Environmental indicators		Circularity		
PIP Rating	Product type	Item code	Catalogue description	Material	Recycled content %	Renewable energy	Manufactured in EMEA	Water use volume (kL H2O) target 0	Carbon Footprint (kg CO2 eq) target 0	Circularity index target 1	Sustainable attributes
	Jar	20003454	C-PET-50ml-SWJar-Trappet	PET	0%	Yes	Yes	0.00	0.22	0.48	
	Cap	20003463	C-PP-Std.Cap-SW-50mlTrappet	PP	0%	Yes	Yes	0.00	0.06	0.41	
	Shive	20003461	C-PE-D60.5mm-Shive-Trappet-50ml	PP	0%	Yes	Yes	0.00	0.01	0.48	

Source: The values for the Environmental Indicators shown in this report have been calculated with the LCA tool PIQET, in September 2022.
Date: 18/01/2023
ER index: N° 1



Legend

Positive Impact Packaging rating



Sustainable attributes



Definitions

Climate change in CO2: The result of global warming due to CO2 emissions released into the atmosphere as a result of the activities of a particular individual, organization, or community.

Circularity: Environmental systems that aim to eliminate waste and maximise the reuse of resources by creating a closed loop system.

Water use volume: The amount of water used in the production and supply of goods and services.

Renewable energy: Energy derived from natural resources that are replenished at a higher rate than they are consumed. Sunlight and wind, for example.

The Environmental Report

Living up to its mission of helping beauty brands perform, Quadpack is a global manufacturer and provider of packaging solutions. Aiming to have a positive impact on people and the planet, the group is committed to continuously improving the sustainability of its product portfolio.

The Environmental Report (ER) is an informative document that collects details of pack components and analyses their Life Cycle Assessment (LCA) data. The aim is to help customers choose their preferred combination relying on science-based information about the product's environmental footprint.

Quadpack uses PIQET's LCA tool to assess the environmental impacts and resource consumption of all packaging options. This data is then translated into our PIP rating system, which is a clear and transparent indicator of a product's sustainability level.



TrapPET Jar 50ml PCR



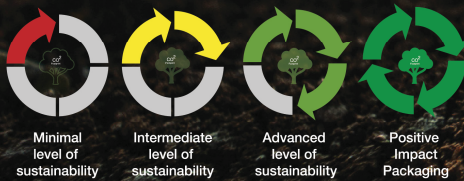
Score		LCA		Input			Environmental indicators		Circularity		
PIP Rating	Product type	Item code	Catalogue description	Material	Recycled content %	Renewable energy	Manufactured in EMEA	Water use volume (kL H2O) target 0	Carbon Footprint (kg CO2 eq) target 0	Circularity index target 1	Sustainable attributes
	Jar	20003455	C-rPET-50%-50ml-SWJar-Trappet	PET	50%	Yes	Yes	0.00	0.2	0.6	
	Cap	20003465	C-rPP-100%-Std.Cap-SW-50mlTrappet	PP	85%	Yes	Yes	0.00	0.05	0.61	
	Shive	20003461	C-PE-D60.5mm-Shive-Trappet-50ml	PP	0%	Yes	Yes	0.00	0.01	0.48	

Source: The values for the Environmental Indicators shown in this report have been calculated with the LCA tool PIQET, in September 2022.
Date: 18/01/2023
ER index: N° 1



Legend

Positive Impact Packaging rating



Sustainable attributes



Definitions

Climate change in CO2: The result of global warming due to CO2 emissions released into the atmosphere as a result of the activities of a particular individual, organization, or community.

Circularity: Environmental systems that aim to eliminate waste and maximise the reuse of resources by creating a closed loop system.

Water use volume: The amount of water used in the production and supply of goods and services.

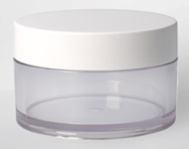
Renewable energy: Energy derived from natural resources that are replenished at a higher rate than they are consumed. Sunlight and wind, for example.

The Environmental Report

Living up to its mission of helping beauty brands perform, Quadpack is a global manufacturer and provider of packaging solutions. Aiming to have a positive impact on people and the planet, the group is committed to continuously improving the sustainability of its product portfolio.

The Environmental Report (ER) is an informative document that collects details of pack components and analyses their Life Cycle Assessment (LCA) data. The aim is to help customers choose their preferred combination relying on science-based information about the product's environmental footprint.

Quadpack uses PIQET's LCA tool to assess the environmental impacts and resource consumption of all packaging options. This data is then translated into our PIP rating system, which is a clear and transparent indicator of a product's sustainability level.



TrapPET Jar 80ml Virgin

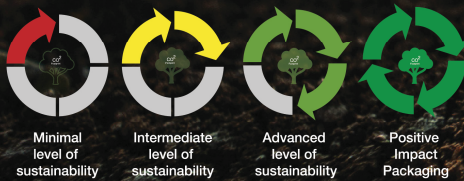
Score		LCA		Input			Environmental indicators		Circularity		
PIP Rating	Product type	Item code	Catalogue description	Material	Recycled content %	Renewable energy	Manufactured in EMEA	Water use volume (kL H2O) target 0	Carbon Footprint (kg CO2 eq) target 0	Circularity index target 1	Sustainable attributes
	Jar	20003456	C-PET-80ml-SWJar-Trappet	PET	0%	Yes	Yes	0.00	0.21	0.48	
	Cap	20003466	C-PP-Std.Cap-SW-80or100mlTrappet	PP	0%	Yes	Yes	0.00	0.07	0.38	
	Shive	20003468	C-PE-D66.5mm-Shive-Trappet-80or100ml	PP	0%	Yes	Yes	0.00	0.02	0.48	

Source: The values for the Environmental Indicators shown in this report have been calculated with the LCA tool PIQET, in September 2022.
Date: 18/01/2023
ER index: N° 1



Legend

Positive Impact Packaging rating



Sustainable attributes



Definitions

Climate change in CO2: The result of global warming due to CO2 emissions released into the atmosphere as a result of the activities of a particular individual, organization, or community.

Circularity: Environmental systems that aim to eliminate waste and maximise the reuse of resources by creating a closed loop system.

Water use volume: The amount of water used in the production and supply of goods and services.

Renewable energy: Energy derived from natural resources that are replenished at a higher rate than they are consumed. Sunlight and wind, for example.

The Environmental Report

Living up to its mission of helping beauty brands perform, Quadpack is a global manufacturer and provider of packaging solutions. Aiming to have a positive impact on people and the planet, the group is committed to continuously improving the sustainability of its product portfolio.

The Environmental Report (ER) is an informative document that collects details of pack components and analyses their Life Cycle Assessment (LCA) data. The aim is to help customers choose their preferred combination relying on science-based information about the product's environmental footprint.

Quadpack uses PIQET's LCA tool to assess the environmental impacts and resource consumption of all packaging options. This data is then translated into our PIP rating system, which is a clear and transparent indicator of a product's sustainability level.



TrapPET Jar 80ml PCR



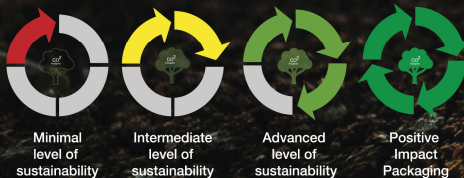
Score		LCA		Input				Environmental indicators		Circularity	
PIP Rating	Product type	Item code	Catalogue description	Material	Recycled content %	Renewable energy	Manufactured in EMEA	Water use volume (kL H2O) target 0	Carbon Footprint (kg CO2 eq) target 0	Circularity index target 1	Sustainable attributes
	Jar	20003457	C-rPET-50%-80ml-SWJar-Trappet	PET	50%	Yes	Yes	0.00	0.19	0.6	
	Cap	20003467	C-rPP-100%-Std.Cap-SW-80or100mlTrappet	PP	85%	Yes	Yes	0.00	0.05	0.61	
	Shive	20003468	C-PE-D66.5mm-Shive-Trappet-80or100ml	PP	0%	Yes	Yes	0.00	0.02	0.48	

Source: The values for the Environmental Indicators shown in this report have been calculated with the LCA tool PIQET, in September 2022.
Date: 18/01/2023
ER index: N° 1



Legend

Positive Impact Packaging rating



Sustainable attributes



Definitions

Climate change in CO2: The result of global warming due to CO2 emissions released into the atmosphere as a result of the activities of a particular individual, organization, or community.

Circularity: Environmental systems that aim to eliminate waste and maximise the reuse of resources by creating a closed loop system.

Water use volume: The amount of water used in the production and supply of goods and services.

Renewable energy: Energy derived from natural resources that are replenished at a higher rate than they are consumed. Sunlight and wind, for example.

The Environmental Report

Living up to its mission of helping beauty brands perform, Quadpack is a global manufacturer and provider of packaging solutions. Aiming to have a positive impact on people and the planet, the group is committed to continuously improving the sustainability of its product portfolio.

The Environmental Report (ER) is an informative document that collects details of pack components and analyses their Life Cycle Assessment (LCA) data. The aim is to help customers choose their preferred combination relying on science-based information about the product's environmental footprint.

Quadpack uses PIQET's LCA tool to assess the environmental impacts and resource consumption of all packaging options. This data is then translated into our PIP rating system, which is a clear and transparent indicator of a product's sustainability level.



TrapPET Jar 100ml Virgin

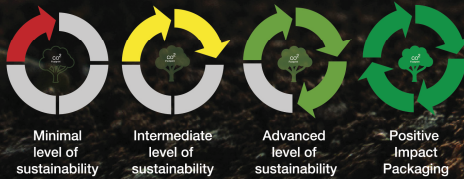
Score		LCA		Input			Environmental indicators		Circularity		
PIP Rating	Product type	Item code	Catalogue description	Material	Recycled content %	Renewable energy	Manufactured in EMEA	Water use volume (kL H2O) target 0	Carbon Footprint (kg CO2 eq) target 0	Circularity index target 1	Sustainable attributes
	Jar	20003458	C-PET-100ml-SWJar-Trappet	PET	0%	Yes	Yes	0.00	0.24	0.48	
	Cap	20003466	C-PP-Std.Cap-SW-80or100mlTrappet	PP	0%	Yes	Yes	0.00	0.07	0.38	
	Shive	20003468	C-PE-D66.5mm-Shive-Trappet-80or100ml	PP	0%	Yes	Yes	0.00	0.02	0.48	

Source: The values for the Environmental Indicators shown in this report have been calculated with the LCA tool PIQET, in September 2022.
Date: 18/01/2023
ER index: N° 1



Legend

Positive Impact Packaging rating



Sustainable attributes



Definitions

Climate change in CO2: The result of global warming due to CO2 emissions released into the atmosphere as a result of the activities of a particular individual, organization, or community.

Circularity: Environmental systems that aim to eliminate waste and maximise the reuse of resources by creating a closed loop system.

Water use volume: The amount of water used in the production and supply of goods and services.

Renewable energy: Energy derived from natural resources that are replenished at a higher rate than they are consumed. Sunlight and wind, for example.

The Environmental Report

Living up to its mission of helping beauty brands perform, Quadpack is a global manufacturer and provider of packaging solutions. Aiming to have a positive impact on people and the planet, the group is committed to continuously improving the sustainability of its product portfolio.

The Environmental Report (ER) is an informative document that collects details of pack components and analyses their Life Cycle Assessment (LCA) data. The aim is to help customers choose their preferred combination relying on science-based information about the product's environmental footprint.

Quadpack uses PIQET's LCA tool to assess the environmental impacts and resource consumption of all packaging options. This data is then translated into our PIP rating system, which is a clear and transparent indicator of a product's sustainability level.



TrapPET Jar 100ml PCR



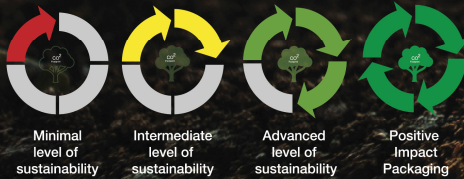
Score		LCA		Input				Environmental indicators		Circularity	
PIP Rating	Product type	Item code	Catalogue description	Material	Recycled content %	Renewable energy	Manufactured in EMEA	Water use volume (kL H2O) target 0	Carbon Footprint (kg CO2 eq) target 0	Circularity index target 1	Sustainable attributes
	Jar	20003459	C-rPET-50%-100ml-SWJar-Trappet	PET	50%	Yes	Yes	0.00	0.22	0.6	
	Cap	20003467	C-rPP-100%-Std.Cap-SW-80or100mlTrappet	PP	85%	Yes	Yes	0.00	0.05	0.61	
	Shive	20003468	C-PE-D66.5mm-Shive-Trappet-80or100ml	PP	0%	Yes	Yes	0.00	0.02	0.48	

Source: The values for the Environmental Indicators shown in this report have been calculated with the LCA tool PIQET, in September 2022.
Date: 18/01/2023
ER index: N° 1



Legend

Positive Impact Packaging rating



Sustainable attributes



Definitions

Climate change in CO2: The result of global warming due to CO2 emissions released into the atmosphere as a result of the activities of a particular individual, organization, or community.

Circularity: Environmental systems that aim to eliminate waste and maximise the reuse of resources by creating a closed loop system.

Water use volume: The amount of water used in the production and supply of goods and services.

Renewable energy: Energy derived from natural resources that are replenished at a higher rate than they are consumed. Sunlight and wind, for example.